



COMPANY PRESENTATION

# Capitalizing on data





# About us



## ABOUT US

# Who we are

**AppliediT** was created in 2014 on fundamentals of 25 years of experience in Automotive and Aerospace Industry. Our experts come from a proven track in technical continuous improvement projects with the major international companies worldwide.

Our unique background has allowed the evolution of “real world” **data analysis and solutions for difficult industry challenges**. Our engineering team combined with our computer science experts has resulted in a digitalization of problem solving “know-how” to **progress x100 faster than standard industry methods**.

Using our **proprietary ADA Technology** we are able to help our costumers to capitalize on data. By giving just-in-time data analysis, expanding visibility to more than a few “guru analyst”. With a simple mouse click the competitive knowledge is enhanced throughout the company. Nowadays, it is very important to take advantage at technological resources in the companies, so we are going to help them to **optimize and improve their global statistics**.

Over the next 5 years, the professionals will develop the ability to utilize all sorts of data in real-time. This will fuel the need for making more intricate problems and computations at scale which will spark the emergence of new data science paradigms due to the needs of future applications.



## ABOUT US

# Where we are



# Leadership Team



**Ignacio Quiñonero**  
Partner & Managing Director



**Patrick Svensson**  
HR & People Analytics



**Christoph Zeihsel**  
Head of Consulting



**José Javier Lage**  
Facilities Manager



## ABOUT US

# Value added services

Our services are designed around three main interconnected areas that encompass data analysis and management, custom app development, and manufacturing process optimization.



ABOUT US / VALUE ADDED SERVICES

# Operational Excellence Projects

- Advanced analytics for data packages
- Structured Problem Solving
- Root cause analysis
- OEE Improvements
- Scrap reduction
- Cycle time optimization
- Lean management for direct/indirect processes





ABOUT US / VALUE ADDED SERVICES

# Data Engineering Services

- Data acquisition
- Data transformation
- Cloud management
- PLC connections
- RPA (Robotic process automation)
- Data base development and management





## ABOUT US / VALUE ADDED SERVICES

# Data Applications Development

- Dashboards
- Web forms for paperless initiatives
- Advanced analytics
- Traceability, MES
- Quality Digital app
- Logistics monitoring
- Machine learning modules



```
length,n=parseInt...
);this.replaceText(n),this.typewrite(t,e)},{key:"keepTyping",value:func...
),this.arrayPos===this.strings.length-1&&(this.complete...
ay))}}},{key:"backspace",value:function(t,e){var s=this;if(t...
is.toggleBlinking(!1);var n=this.humanizer(this.backSpeed),...
smartBackspace){var i=s.strings[s.arrayPos+1];i&&n===i.subs...
s.strings.length?(s.arrayPos=0,s.options.onLastStringBacksp...
complete",value:function(){this.options.onComplete(this),thi...
=s,this.pause.curString=t,this.pause.curStrPos=e},{key:"to...
ng=t;var e=t?"infinite":0;this.cursor.style.animationIterat...
gsIfNeeded",value:function(){this.shuffle&&(this.sequence=t...
this;return this.el.className+=" "+this.fadeOutClass,this.o...
length>t.arrayPos?t.typewrite(t.strings[t.sequence[t.array...
attr?this.el.setAttribute(this.attr,t):this.isInput?this.i...
},{key:"bindFocusEvents",value:function(){var t=this;this.i...
e){t.el.value&&0!==t.el.value.length||t.start()}}},{key:"i...
"),this.cursor.className="typed-cursor",this.cursor.innerHTM...
{});e["default"]=a,t.exports=e["default"]}}Object.defineProperty...
Error("Cannot call a class as a function"))Object.defineProperty...
ts[e];for(var n in s)Object.prototype.hasOwnProperty.call(s...
enumerable||1,n.configurable=10,"value"in n&&(n.writable=...
n(a),l=function(){function t(){i(this,t)}return o(t,["key:"...
,t.isInput="input"===t.el.tagName.toLowerCase(),t.cursorBlinking=10,...
ursor,t.cursorChar=t.options.cursorChar,t.cursorBlinking=10,...
options.typeSpeed,t.startDelay=t.options.startDelay,t...
t.fadeOutClass=t.options.fadeOutClass,t...
stringsElement.style.display="block",t.stringsElement.style.ar...
string:" ",c
```

## ABOUT US

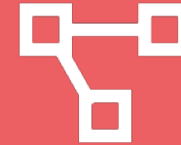
# What do we do

## We are solutions providers for industry 4.0

Industry 4.0 refers to the intelligent networking of machines and processes for industry with the help of information and communication technology.



Consulting and  
training services



Inter  
Connectivity



Advanced  
Analytics



Ramp up  
support



Customized  
solutions



Augmented  
Intelligence

# Capitalizing on data

It's difficult to see what you are not looking for...

It is estimated that we  
use less than...

 **10%**  
of our brain power.

What percentage of  
your data do you  
estimate you truly use?  
Less than...

**0.0001%**

Your company data is the  
most underused asset  
which you have.





# We transform your **data** into **knowledge** to reach **excellence**



ERP Systems

Transactional data



Machine Data

Variable data



Human based  
information



# Our clients & partners

CLIENTS & PARTNERS

# Trusted by industrial leaders



thyssenkrupp



DAIMLER



AIRTIFICIAL

+GF+

vitesco  
TECHNOLOGIES



aumann

ALLGAIER

FARO



RECARO

JTEKT



handtmann



Lindner



SCHUBERTH



DRÄXLMAIER



## CLIENTS & PARTNERS

# Projects **around the world**

**+25** years of  
experience

**+15** countries

**+100** completed  
projects

**\$6**mill benefits  
generated

CLIENTS & PARTNERS

# Proud of **our partners**

AIRTIFICIAL



Microsoft

STAUFEN.



CIMNE<sup>R</sup>





# Solutions



## SOLUTIONS

# We organize **your information**

### Inputs



#### Management tools

Salesforce, SAP, RP Data, ...



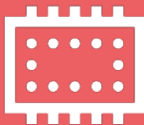
#### Files

Excel, CSV, TXT, ...



#### Databases

SQL Server, Oracle, MySQL, ...



#### Machine Data

Zeiss, Profinet, OPC Foundation, ...



#### Data normalization

### Output

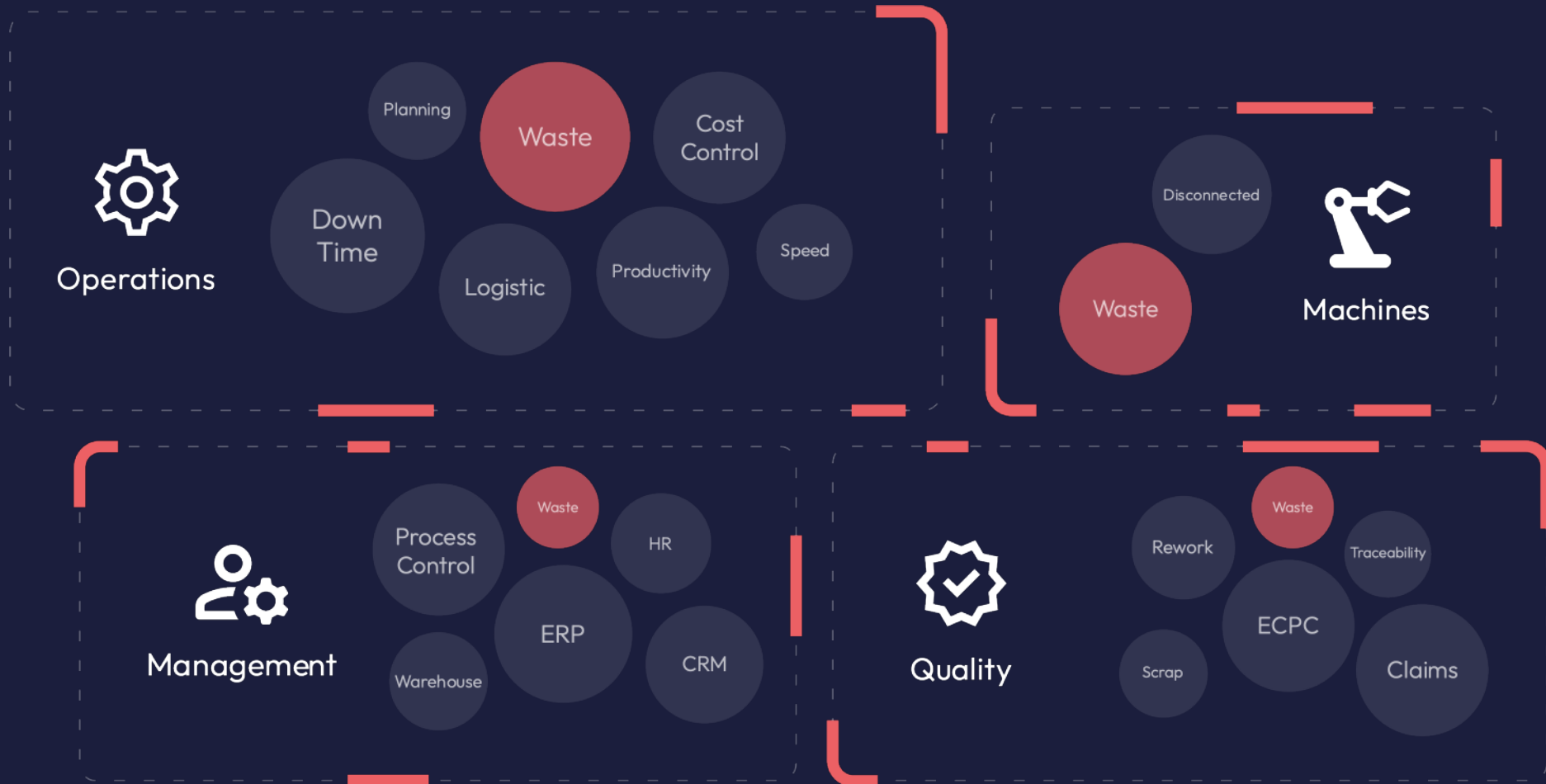
Indexed data, related and  
optimized tables,  
improved access speed, ...



#### RTM Pro

## SOLUTIONS

# Before **AppliediT**



## SOLUTIONS

# After AppliediT





## SOLUTIONS

# What services do we offer?

## Include

- RTM Pro, Floating licenses.
- Dashboard lite multiusers:
  - Production
  - Logistics
  - Quality
  - Performance
- Transflow multiusers (Indirect departments)
- Interconnected data base development
- Training to ensure a correct function
- Dedicated continuous improvement engineer
- Maintenance

## Not include

- Screens and devices.
- Development by external companies of communication functions with ERP/Management System, unless they can be developed internally by AppliediT, to be agreed during the development of the project.
- Subsistence allowances and travel expenses for the technical team displaced from the Cádiz plant, if it includes consultant man-hours. The client will be able to determine the formula to proceed in this matter, including prior authorization.
- Hiring of servers (optionally, if the customer requires it)



# Products

## Products

# Extract and analyze **your data**



### **RTM Pro**

Manufacturing Analytics



### **RTM Lite**

KPI Monitoring



### **TransFlow**

Transactional Analytics



### **DefectMap**

Defectology



### **Function Model**

Human Knowledge Structuring



## Products

# Extract and analyze **your data**



### RTM Pro

#### Manufacturing Analytics

RTM is “in data base” software analytics platform specifically developed for problem solving in the manufacturing environment.

Whereas other software analysis platforms are either very general or very specific to an industry solution, RTM platform was developed from the “bottom-up” from years of practical problem-solving experience in the engineering manufacturing environments.



### RTM Lite

#### KPI Monitoring

It is a web-based solution to provide additional insights which can give a better breakdown of high level KPIs and go down to the machine level to identify root cause.

All these powerful features are achieved through dynamically linked graphs and simple mouse clicks.



### TransFlow

#### Transactional Analytics

TransFlow is an application that monitoring all the transactional data within every process.

It allows you to detect possible bottlenecks in the transaction and it also uses advanced analytics in order to highlight which are the fastest processes.



### DefectMap

#### Defectology

DefectMap is a tool used mainly for register defects in pieces and keep a record of these defects.

It combines specific engineering knowledge with statistical methods to facilitate the insertion

Features: With this tool you can insert defects in your parts and add custom parameters to these defects.



### Function Model

#### Human Knowledge Structuring

FunctionModel is a system which can manage diverse projects. It is possible to create decision trees, attach media or create metrics with the parents and children.

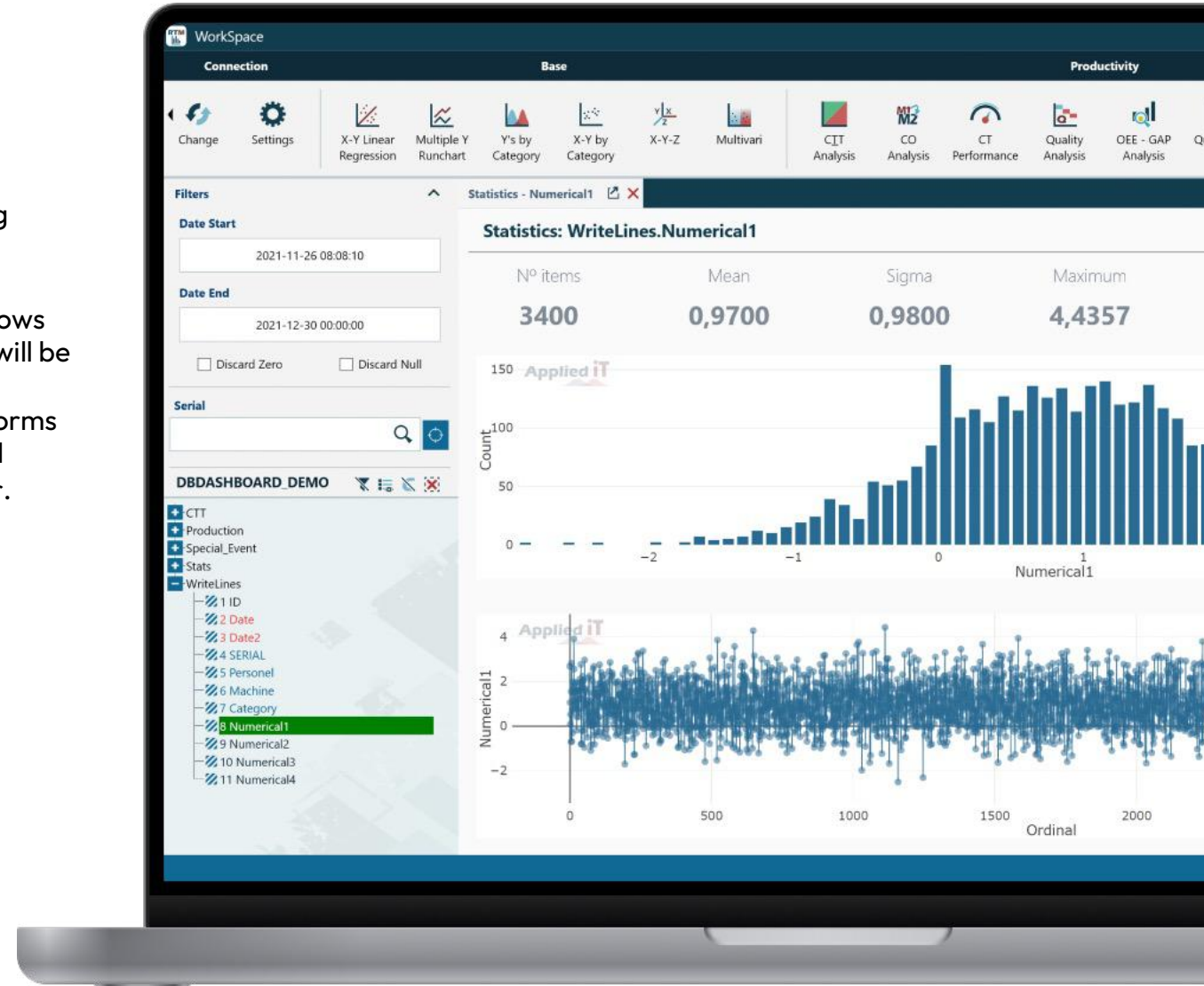
It combines also a user management to create work teams and analyze together every single project.

## PRODUCTS

# RTM Pro

RTM is “in data base” software analytics platform specifically developed for Continuous improvement in the manufacturing environment. Whereas other software analysis platforms are either very general or very specific to a particular industry solution, AppliediT RTM platform was developed from a “bottom-up” approach, from years of practical problem-solving experience in the engineering manufacturing environments.

Knowledge is gained by identifying non-random patterns in your company’s data bases. The identification of these patterns allows ranking of key parameters which will be subsequently analyzed through regression techniques and other forms of correlations/trending statistical analysis to predict future behavior.

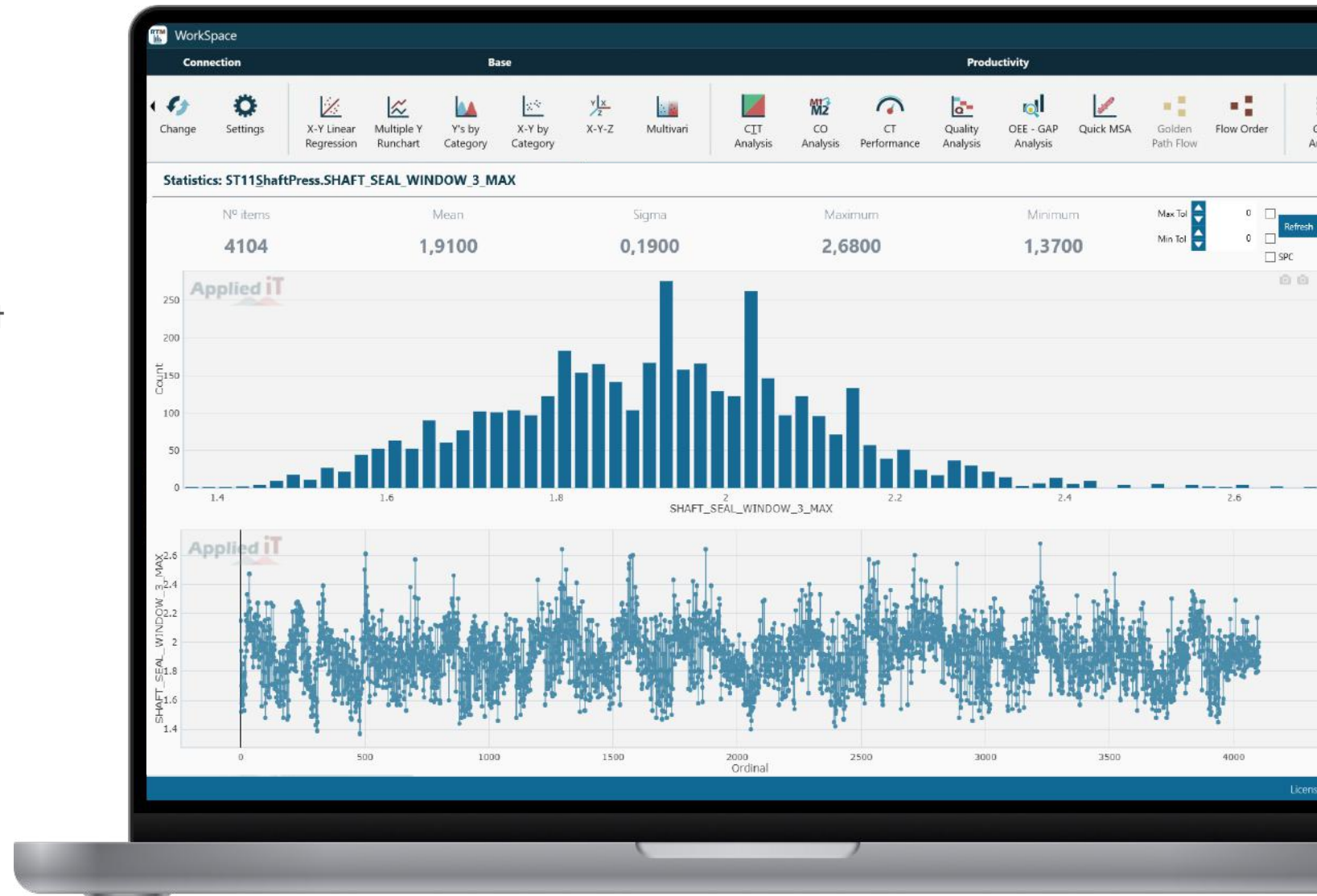


RTM PRO

# Descriptive statistics

Run chart and Histogram is the starting point for any further analysis: a simple mouse click on the variable's tables will yield parameter visualization and descriptive statistics.

This window output is interactive meaning clicking on a single point or single key entries will yield more info and further analysis.



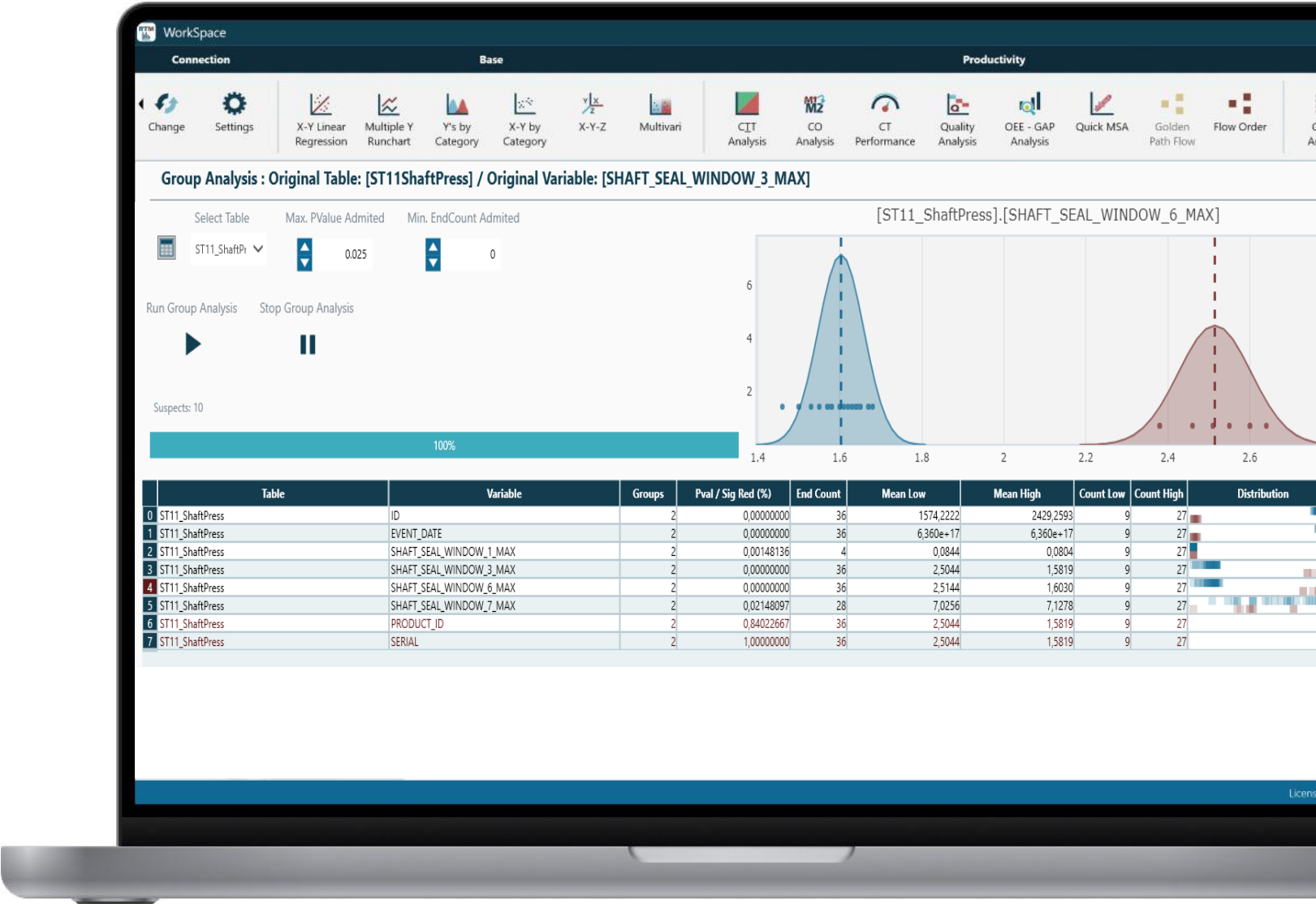


RTM PRO

# Comparison Analysis

Selection of logical groups and pairs for automated analysis. It provides a ranking of factors with largest contrast within groups.

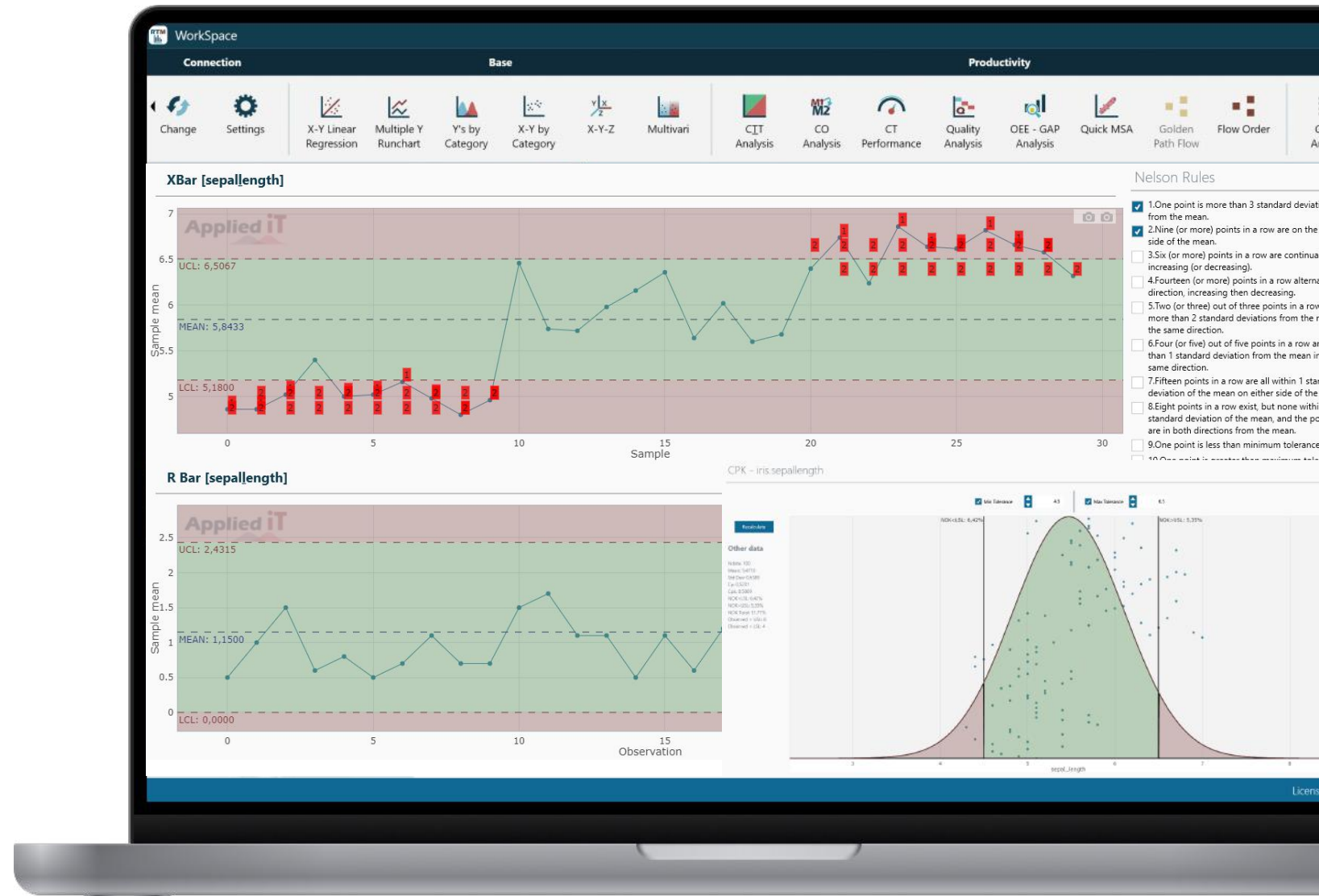
Dynamically selecting logical groups/pairs on the graphs will yield immediate ranking results using parametric and non-parametric test simultaneously.



RTM PRO

# Normal Statistics

Normality tests and other tools such as Process capability (Cpk) analysis can be performed on a single keyboard entry.

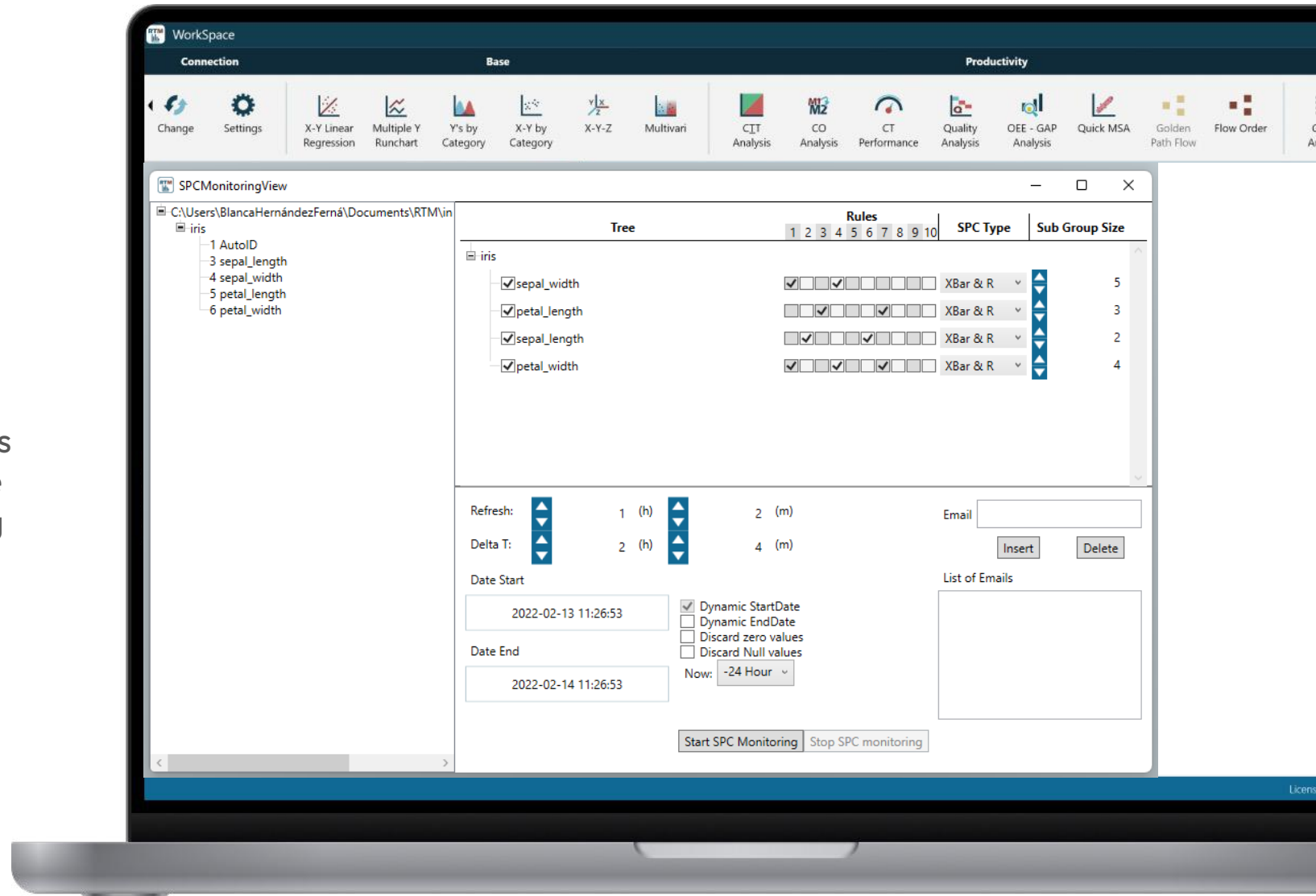


RTM PRO

# SPC Monitoring

Using SPC Monitoring, you can monitor any process parameters of interest.

When connected to a real time data base, it is possible to configure the system to let people know when defined rules are broken, sending alerts by email.

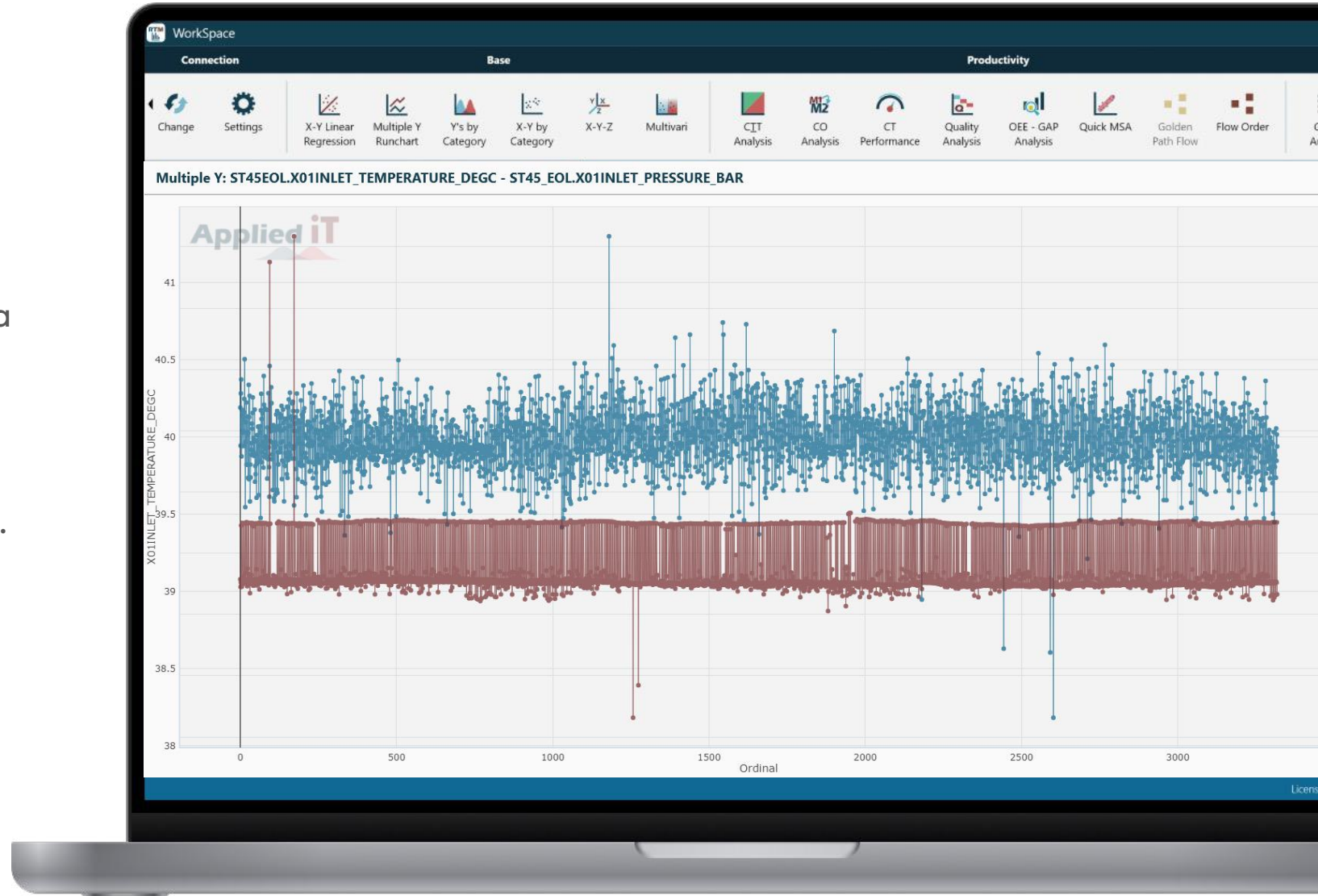


RTM PRO

# Multiple Y Analysis

Multiple Y Run Chart can plot time series data on the same graph allowing intuition as to their interaction over time.

To view these parameters as an X-Y plot, simple click <R> in the graph to change views.

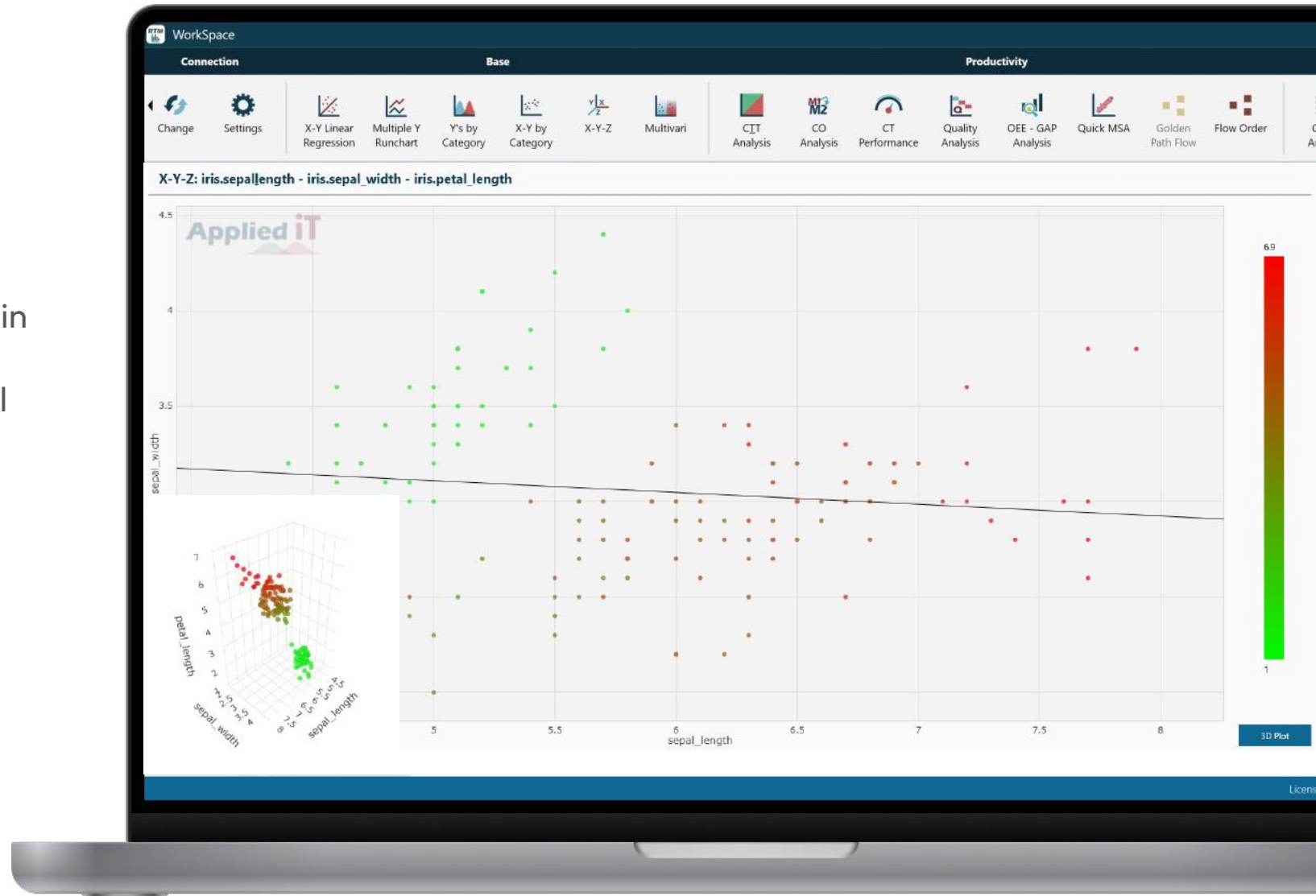




RTM PRO

# X-Y-Z Regression

Represents three numeric variables selected in one single chart and visualize the correlation between them in 2D+Color or 3D dimensional space.

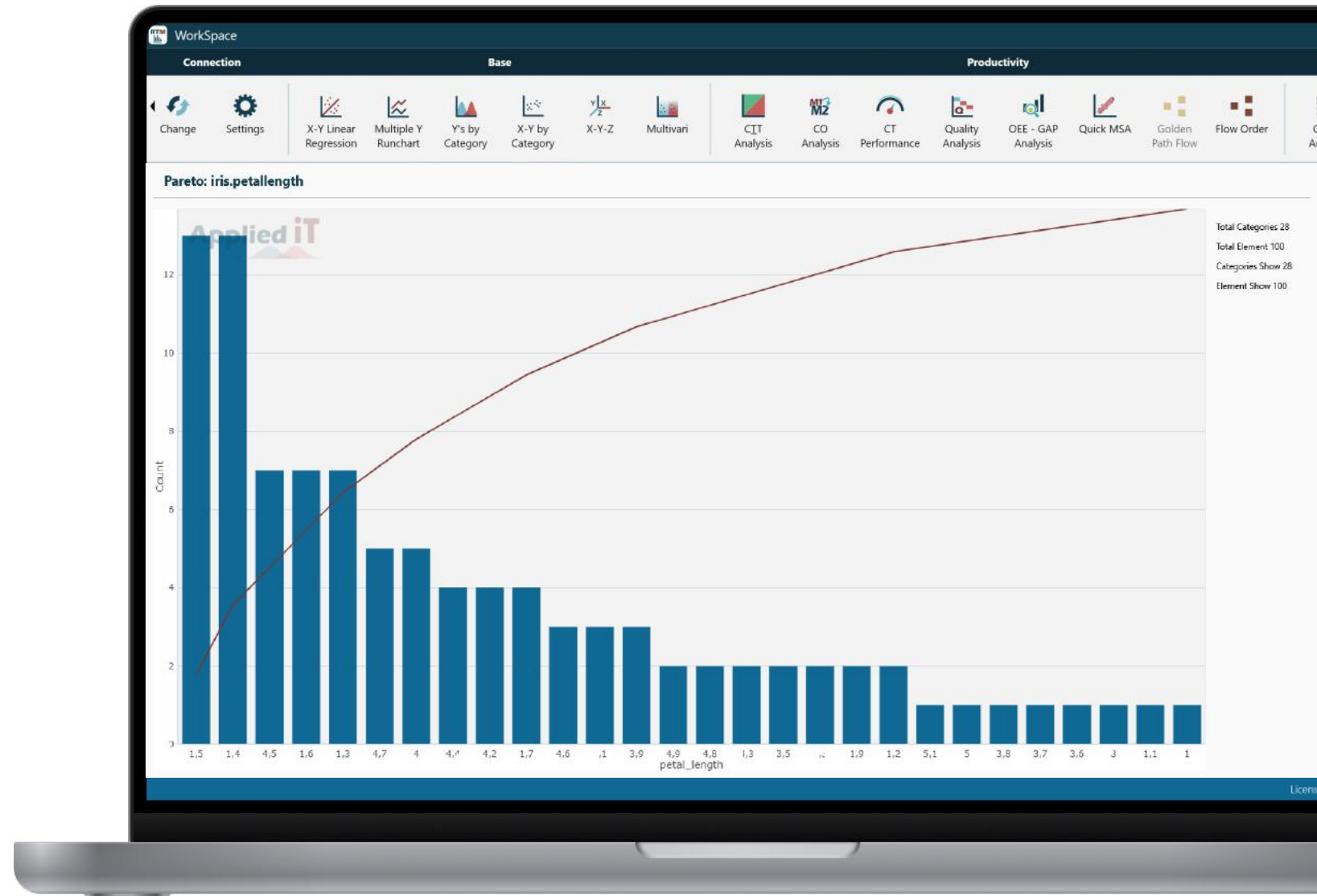


RTM PRO

# Pareto Analysis

Shows pareto diagram of selected categorical values. This is a simple tool but very often used.

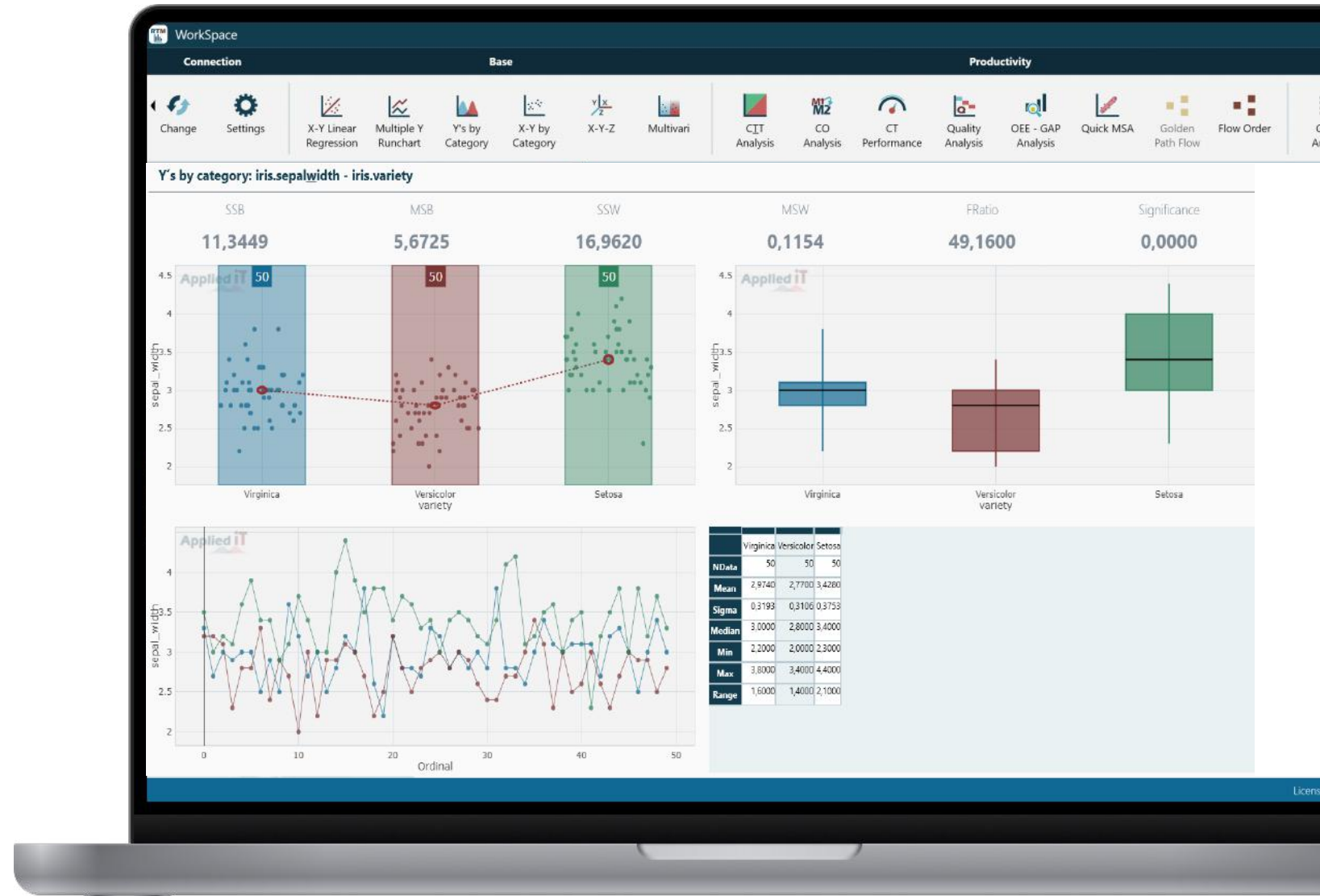
Thus, an instant view can be executed by directly clicking on any categorical value.



RTM PRO

# Y by Category

Allows the user to see a variable ordered by category in various visualization graphs. Dot plot, box plot, run chart, or ANOVA.

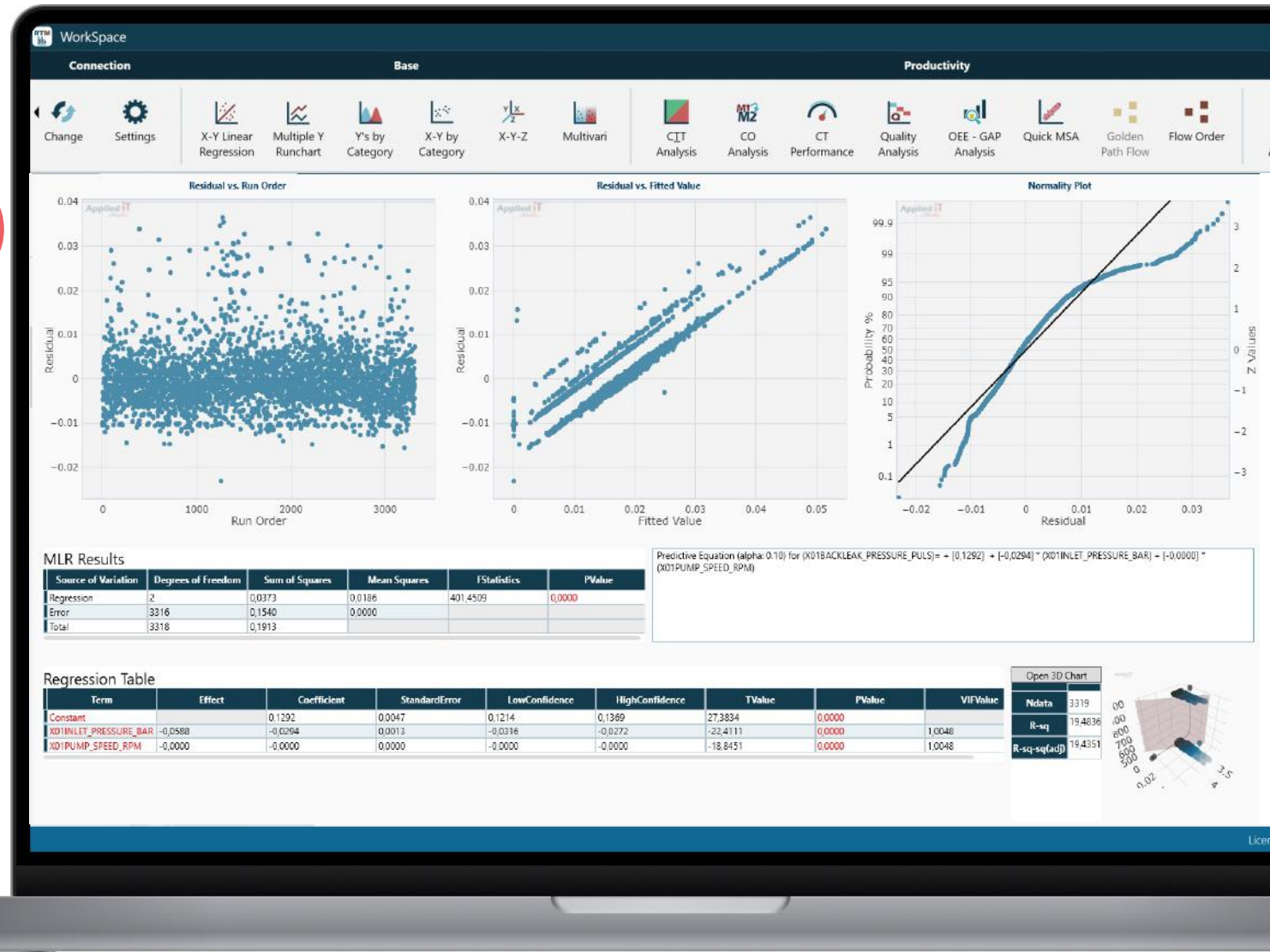


RTM PRO

# Multiple Linear Regression (MLR)

MLR can be used to construct a predictive model of an output variable from multiple inputs variables.

This function allows for more complicated models to be analyzed in an intuitive manner.

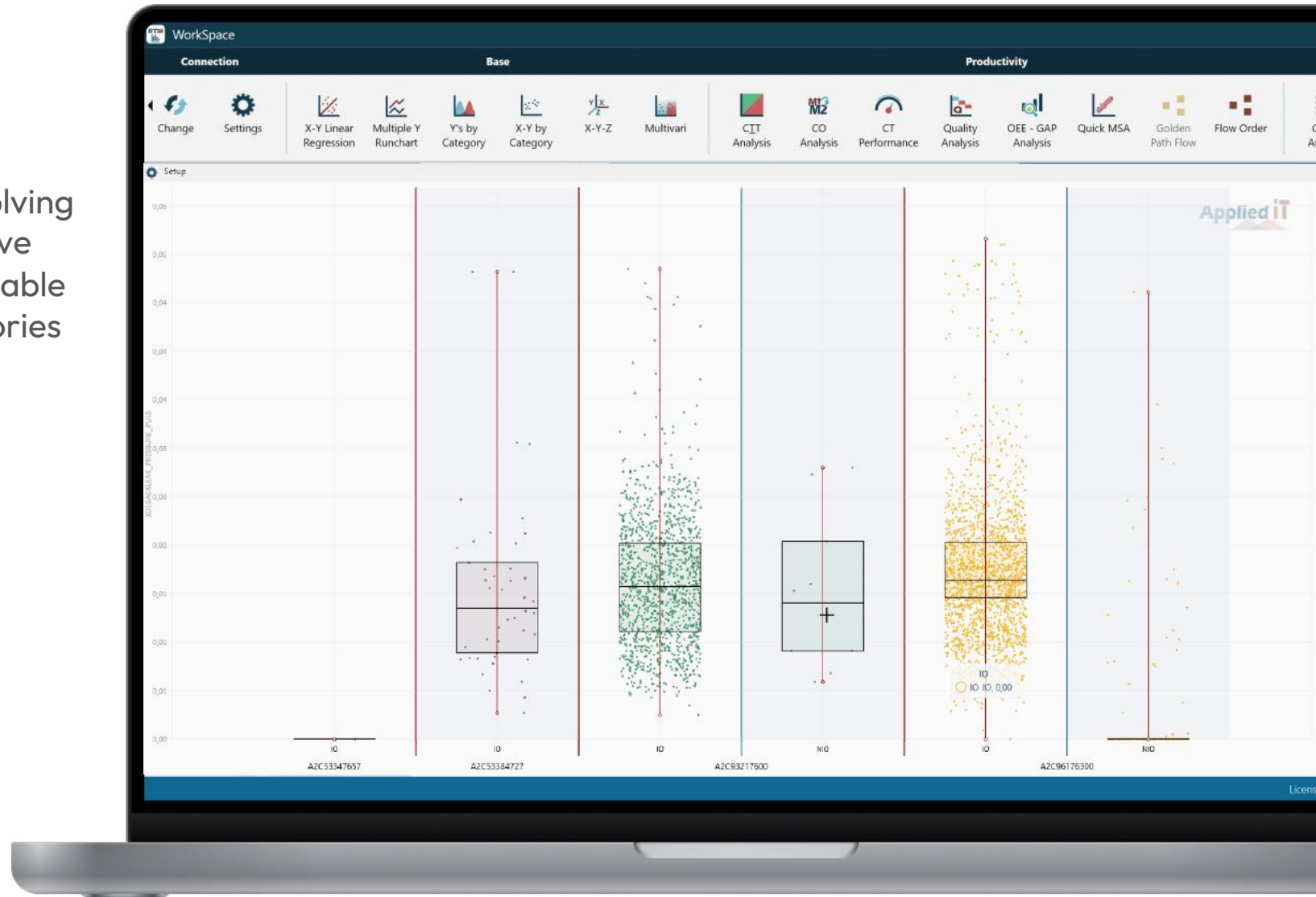




RTM PRO

# Multivari

Multi-vari can be very useful for analysis involving multiple categorical variables, you can observe the distribution/variation of a numerical variable according to the hierarchy of multiple categories

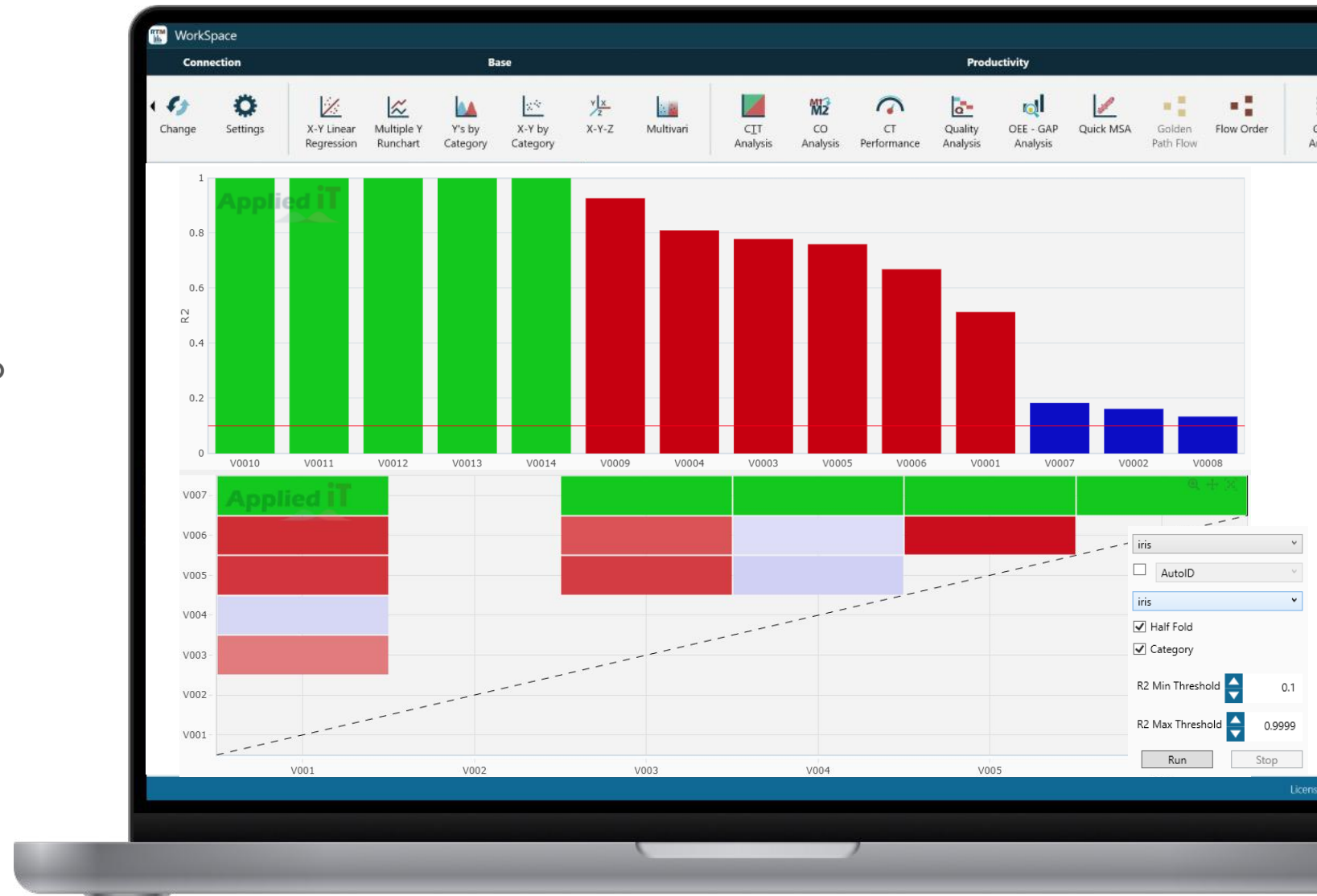


## RTM PRO

# Wormhole

The Wormhole –ADA (Automated Data Analysis) Engine can analyze the correlation among every variable within a dataset on a mouse click. It provides results graphically in a very intuitive manner by means of a Pareto and a “Data Image”.

The user can further analyze a particular parameter by simply clicking within the graph.

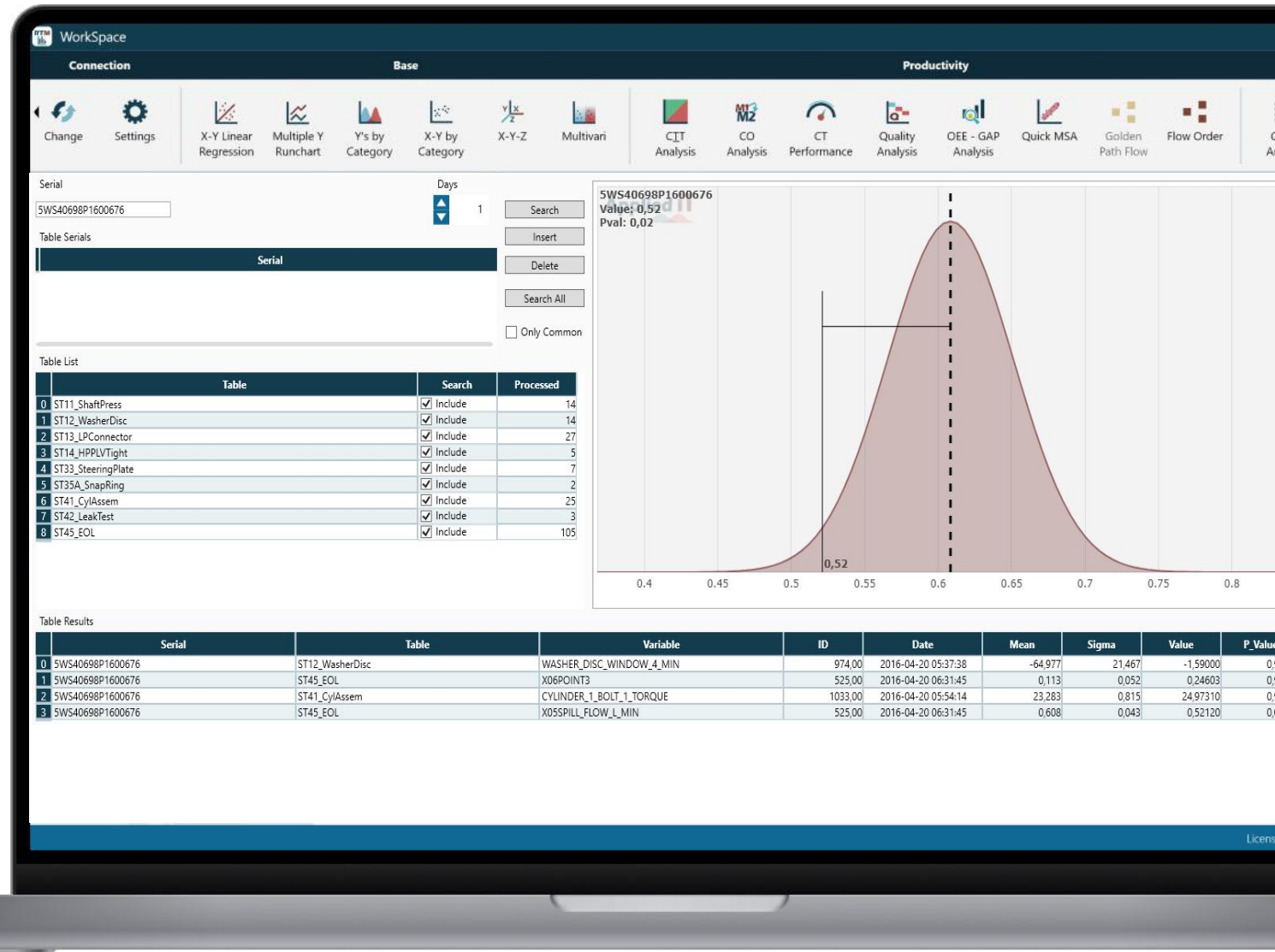


RTM PRO

# Special Search

The Special Event functionality searches for outliers or special values of a serial number within all the variables and tables of the database.

It provides a list of “suspicious” parameters for the reference serial number in question. Very useful when you need to know everything about an outlier or field retuned part.

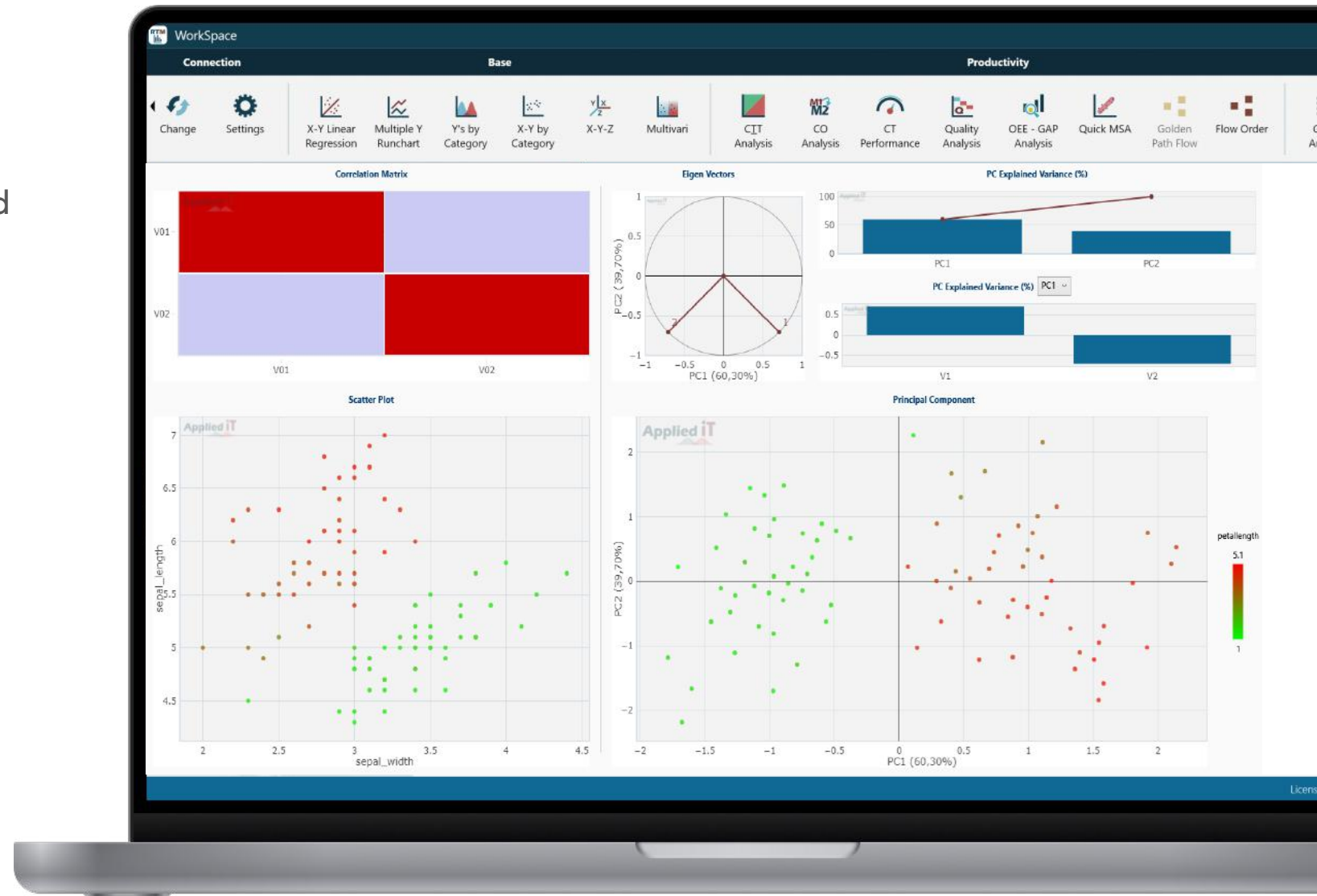


## RTM PRO

# PCA

A PCA (Principal Component Analysis) is used to reduce the dimensionality of a data set.

This is useful when the number of variables is too high and the analyst to reduce the dimensionality to gain better insight.



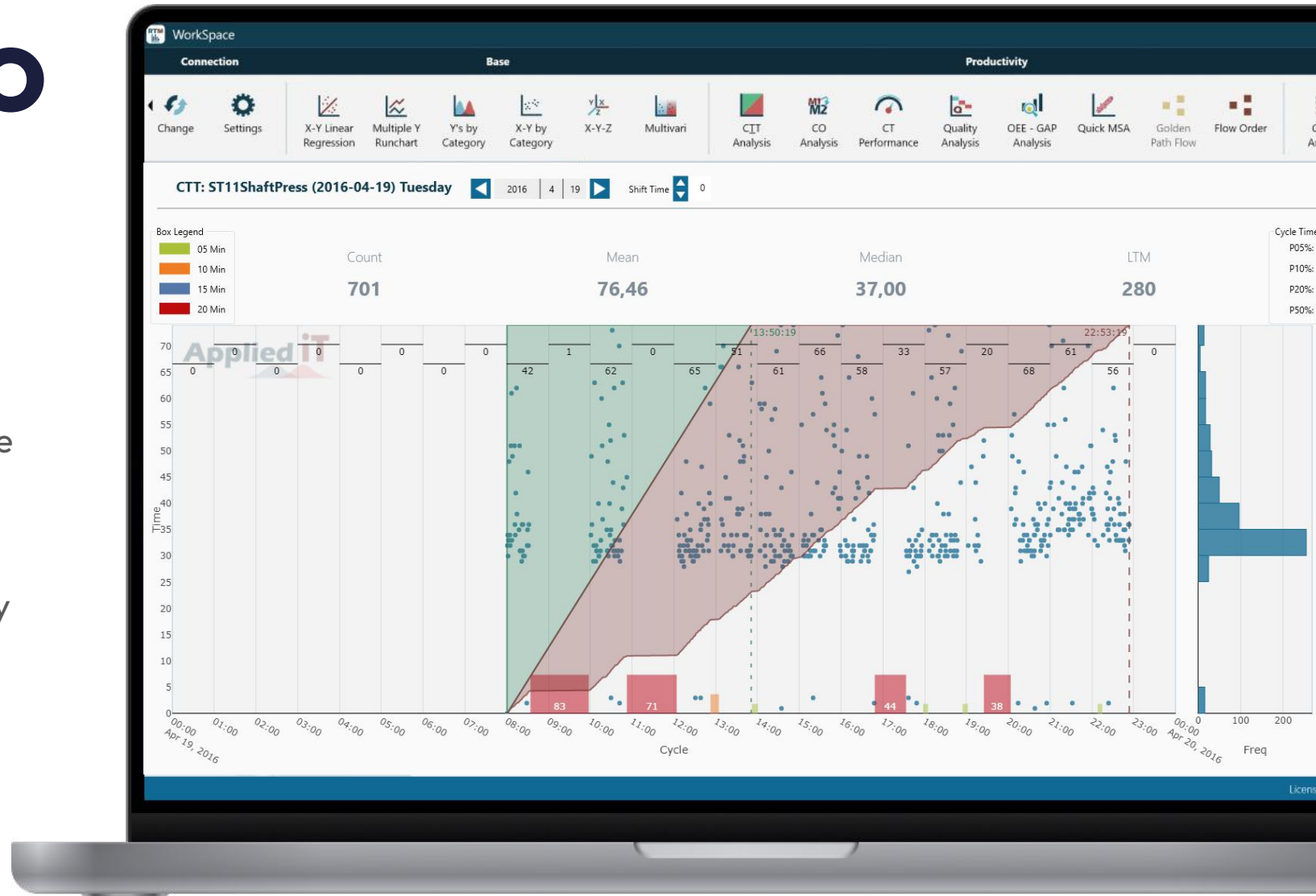


RTM PRO

# CycleTime to Time (CTT)

CTT is a powerful way of monitoring stations cycle time (CT). It does not only provide the CT of every part which goes through a specific operation, but it is also possible to see the downtimes/idle.

CTT is a powerful tool for cycle time reduction projects or quantifying productivity on a single graph.



PRODUCTS / RTM PRO

# Continuous Improvement 4.0



Less time



Less effort



More efficiency



PRODUCTS / RTM PRO / TRAININGS

# Certifications in advanced analytics

	Beginner	Advanced	Expert
Available Trainings	<ul style="list-style-type: none"> <li>▪ Introduction &amp; Basics</li> <li>▪ Import Excel File</li> <li>▪ Connection &amp; Configuration</li> <li>▪ Filters</li> <li>▪ Run Chart &amp; Histogram</li> <li>▪ Pareto Analysis</li> <li>▪ X-Y Linear Regression</li> <li>▪ X-Y-Z</li> <li>▪ CTT Analysis (Production Time)</li> </ul>	<ul style="list-style-type: none"> <li>▪ Wormhole – ADA Engine</li> <li>▪ Capability Analysis (Cp, Cpk)</li> <li>▪ Y's By Category</li> <li>▪ Multivari</li> <li>▪ Trend (running average)</li> <li>▪ DBScan Clustering</li> <li>▪ X-Y by Category</li> <li>▪ Group Analysis</li> <li>▪ Pair Analysis</li> <li>▪ Special Event Search</li> </ul>	<ul style="list-style-type: none"> <li>▪ SPC &amp; SPC Monitoring</li> <li>▪ Key variables – Report</li> <li>▪ Key variables – War room</li> <li>▪ Multiple Linear Regression (MLR)</li> <li>▪ Principal Component Analysis (PCA)</li> <li>▪ Golden Path Flow</li> </ul>
Requirements	<ul style="list-style-type: none"> <li>▪ Attendance</li> </ul>	<ul style="list-style-type: none"> <li>▪ Attendance</li> <li>▪ Test</li> </ul>	<ul style="list-style-type: none"> <li>▪ Attendance</li> <li>▪ Test</li> <li>▪ Internal project</li> </ul>

## PRODUCTS

# RTM Lite

It is a web-based solution to provide additional insights which can give a better breakdown of high level KPIs and go down to the machine level to identify root cause.

All these powerful features are achieved through dynamically linked graphs and simple mouse clicks.





## PRODUCTS / RTM LITE

# Special Events

## Problem Solving Analytics Tool

It searches for special causes of a specific Serial Number within all the stations it goes through

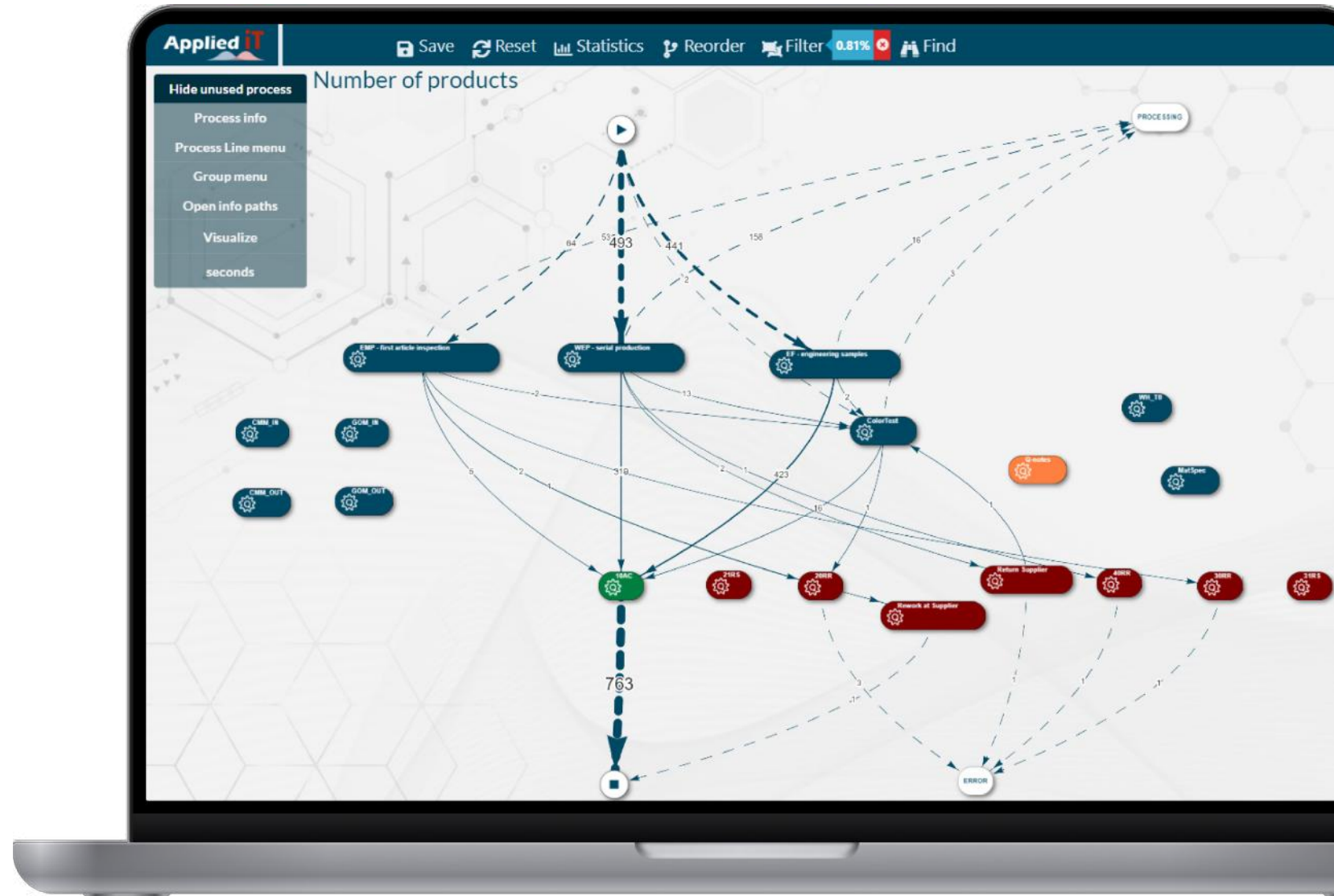


## PRODUCTS

# TransFlow

TransFlow is an application that monitoring all the transactional data within every process.

It allows you to detect possible bottlenecks in the transaction and it also uses advanced analytics in order to highlight which are the fastest processes.



## PRODUCTS

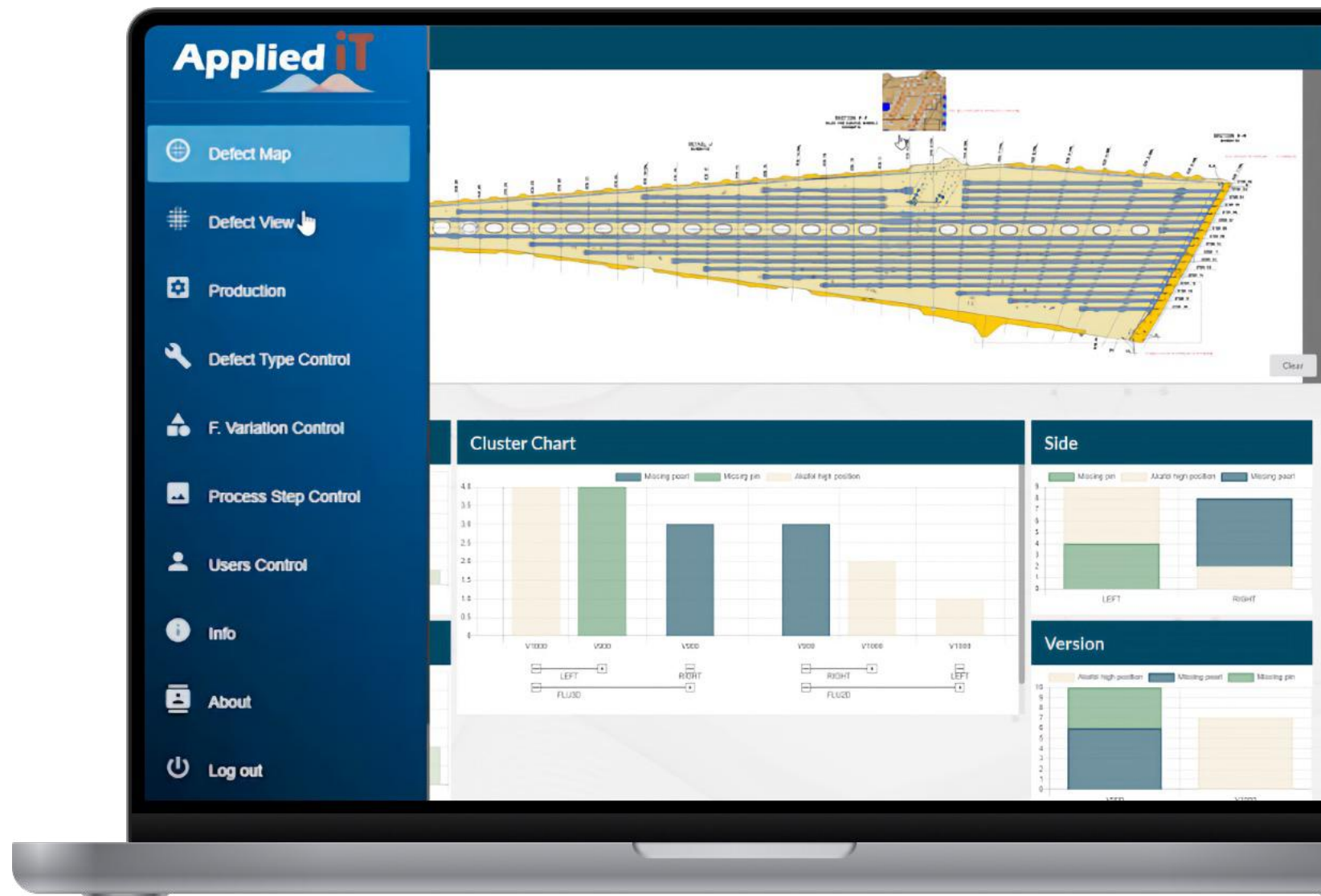
# DefectMap

DefectMap is a tool used mainly for register defects in pieces and keep a record of these defects.

It combines specific engineering knowledge with statistical methods to facilitate the insertion

**Features:**

With this tool you can insert defects in your parts and add custom parameters to these defects.

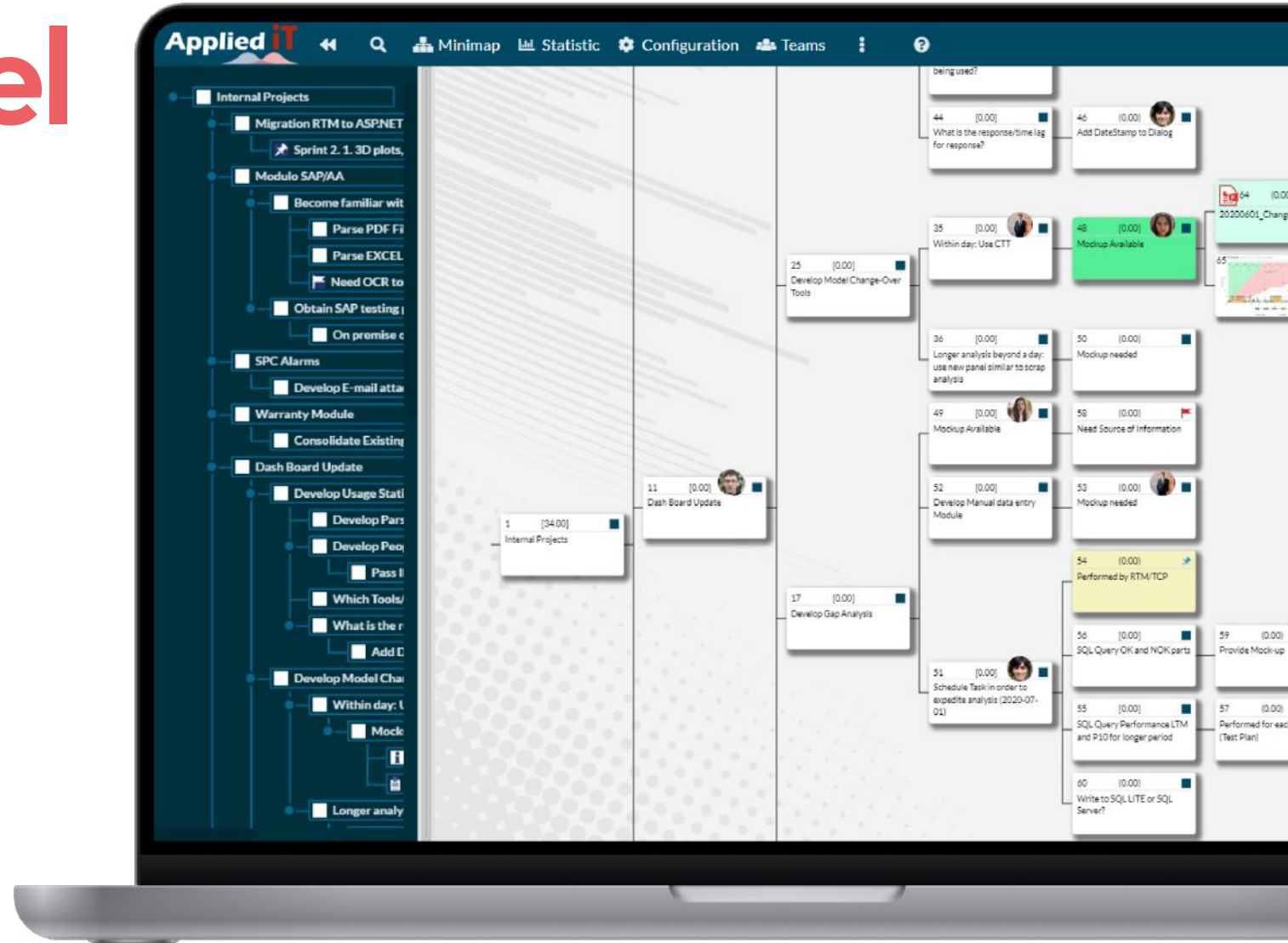


## PRODUCTS

# Function Model

FunctionModel is a system which can manage diverse projects. It is possible to create decision trees, attach media or create metrics with the parents and children.

It combines also a user management to create work teams and analyze together every single project.







# Customization

## CUSTOMIZATION

# RTM Lite

## About client

Commonly known as Continental or colloquially as Conti, is a German multinational automotive parts manufacturing company specializing in brake systems, interior electronics, automotive safety, powertrain and chassis components, tachographs, tires and other parts for the automotive and transportation industries.

## Project details

We develop a personalized web app for the visualization of graphs for CTAT analysis with a filter system adapted to the client's specifications.



## CUSTOMIZATION

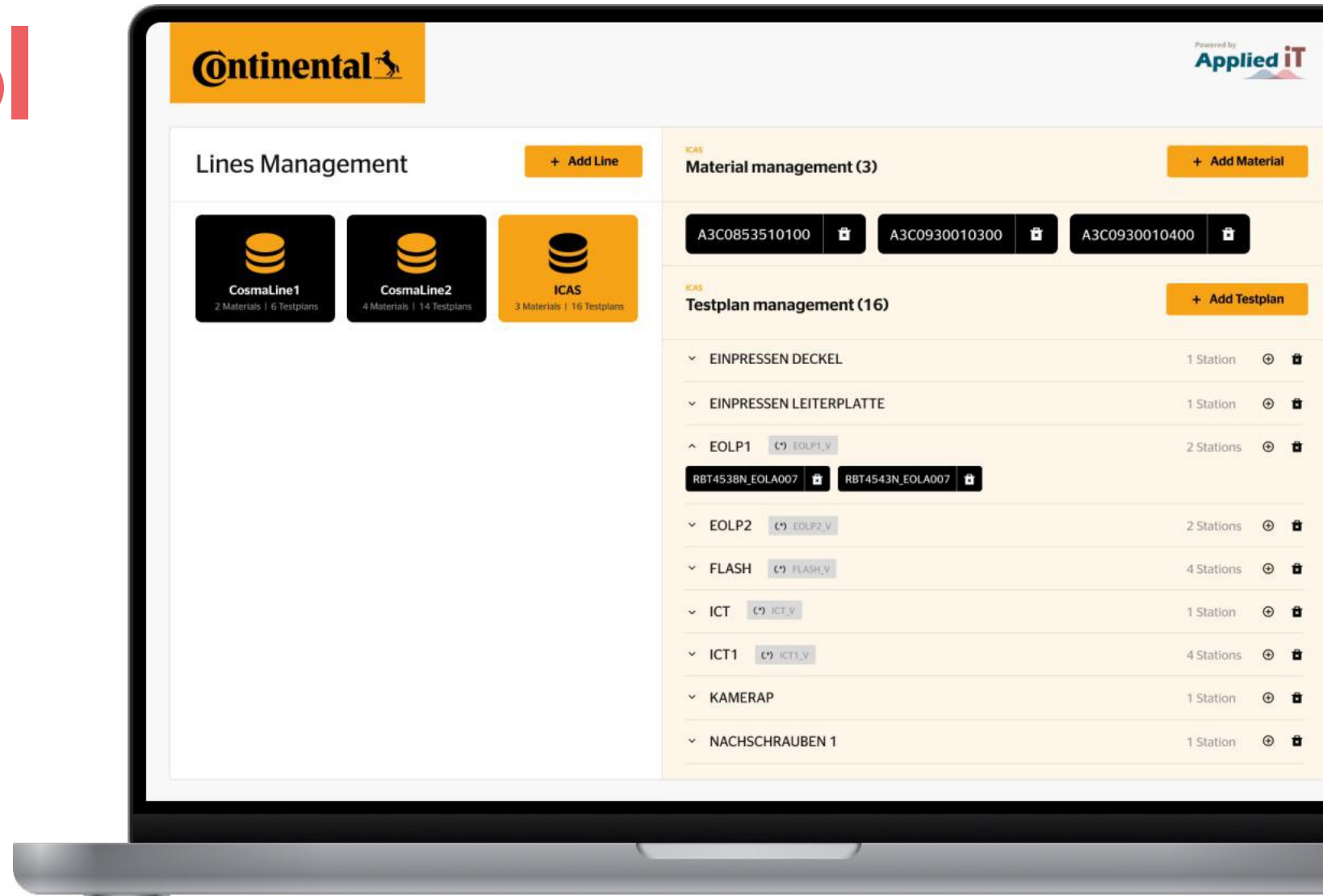
# Parsing Tool

## About client

Commonly known as Continental or colloquially as Conti, is a German multinational automotive parts manufacturing company specializing in brake systems, interior electronics, automotive safety, powertrain and chassis components, tachographs, tires and other parts for the automotive and transportation industries.

## Project details

We develop a custom web app for managing the data parsing of your databases, being able to navigate through them and create new structures and patterns.





## CUSTOMIZATION

# Managing Data

## About client

Lindner Group is a leading company for the building envelope, interior fit-out and insulation. We advise, develop, produce and implement products and projects for our customers - from single-trade jobs to turnkey solutions, for new buildings and renovations.

## Project details

We develop a custom web app for the introduction, validation and management of your data structure. Improving the uniformity of the data and the speed of access to them.

[illegible]

## CUSTOMIZATION

# Defect Map

## About client

Schuberth GmbH is a German producer of safety helmets, producing combat helmets for Bundeswehr (Gefechtshelm M92), protective headgear for Formula One, motorcyclists and industrial workers. Schuberth is currently based in Magdeburg and employs about 300 employees, producing 1.5 million helmets each year.

## Project details

Develop an app for the control of defects in helmets through a 3D model on which to mark the defects located during manufacturing. Being able to access production data in a temporary interval.





## CUSTOMIZATION

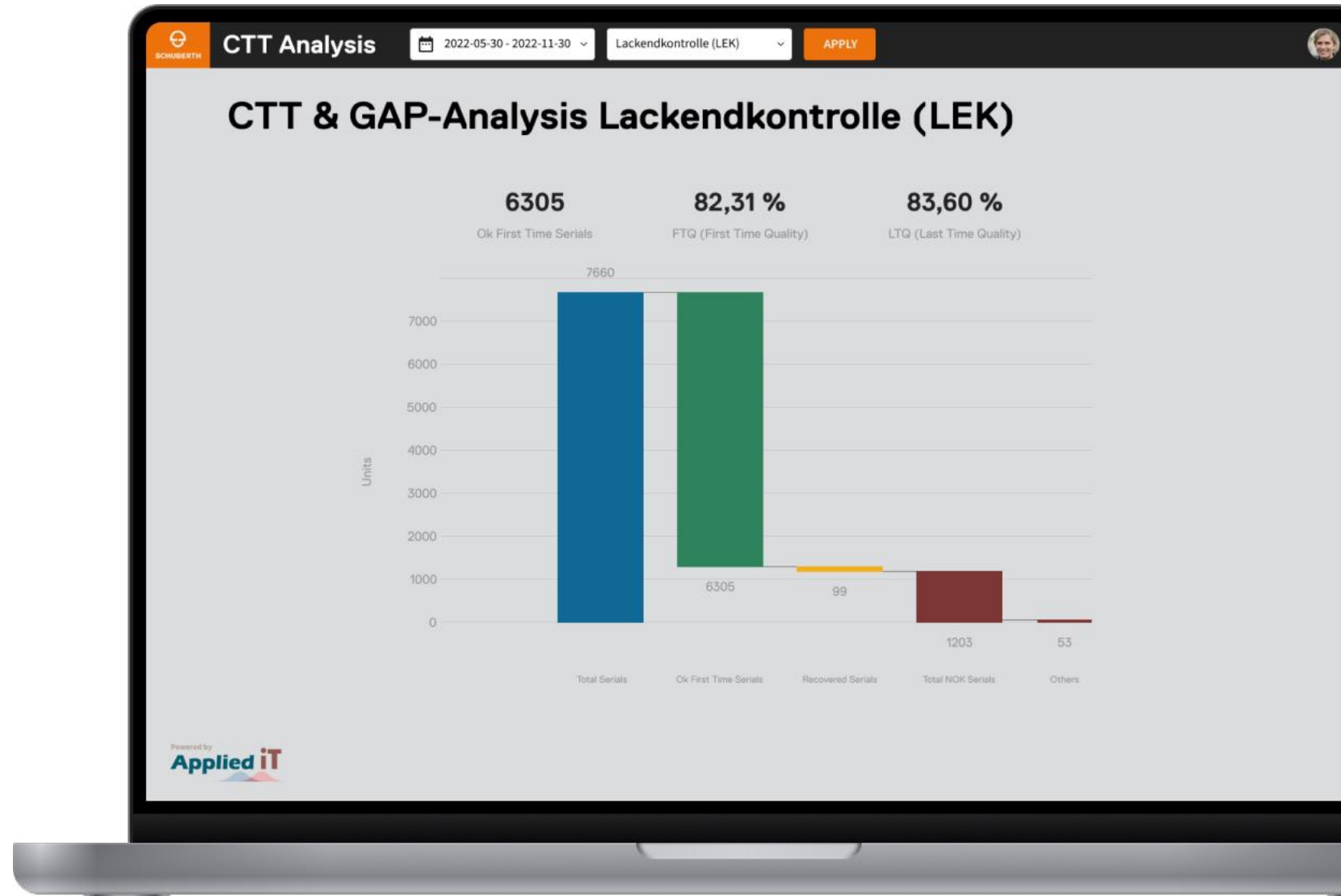
# RTM Lite

## About client

Schuberth GmbH is a German producer of safety helmets, producing combat helmets for Bundeswehr (Gefechtshelm M92), protective headgear for Formula One, motorcyclists and industrial workers. Schuberth is currently based in Magdeburg and employs about 300 employees, producing 1.5 million helmets each year.

## Project details

We develop a personalized web app for the visualization of graphs for CTT & GAP analysis with a filter system adapted to the client's specifications.

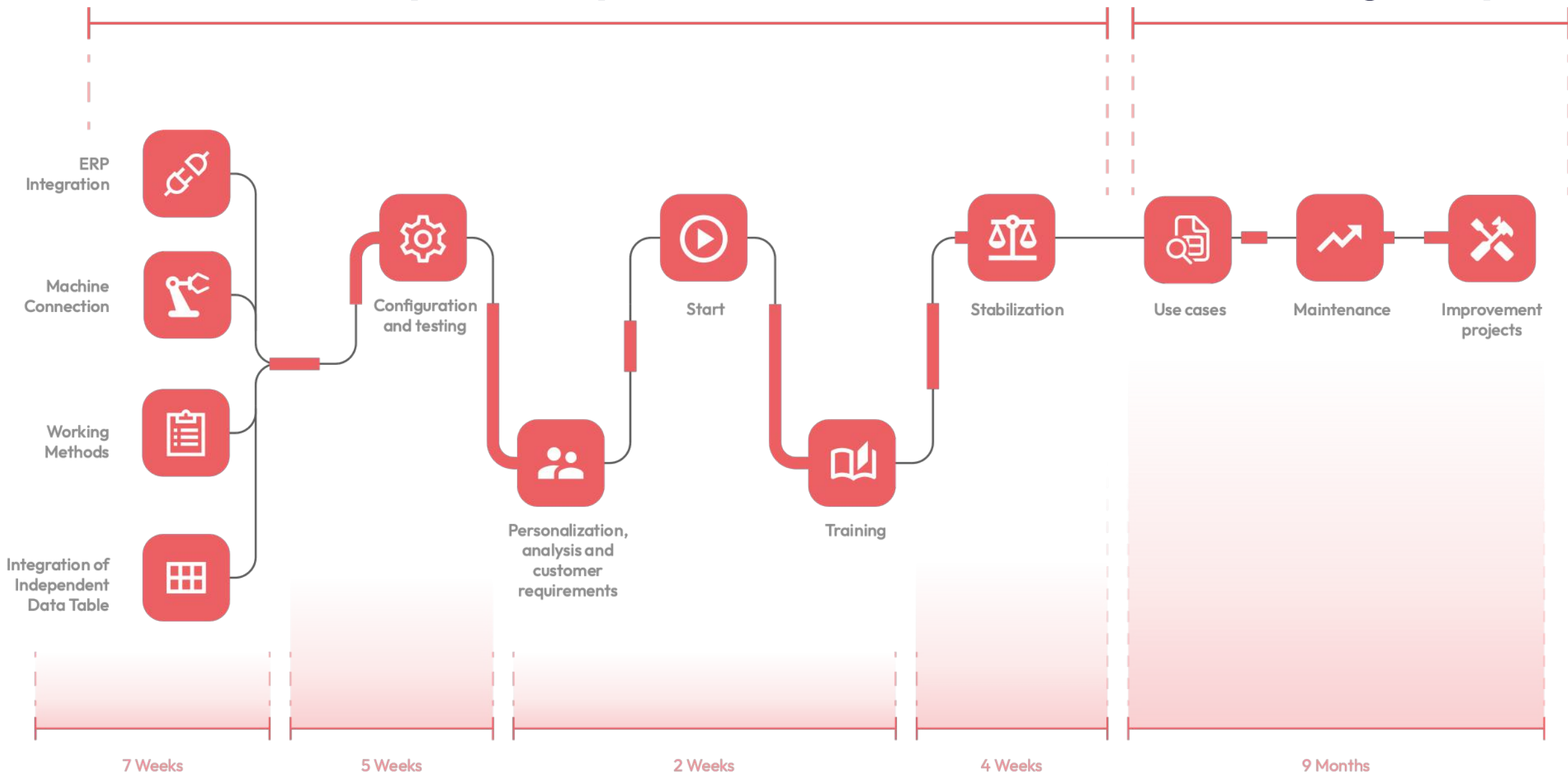




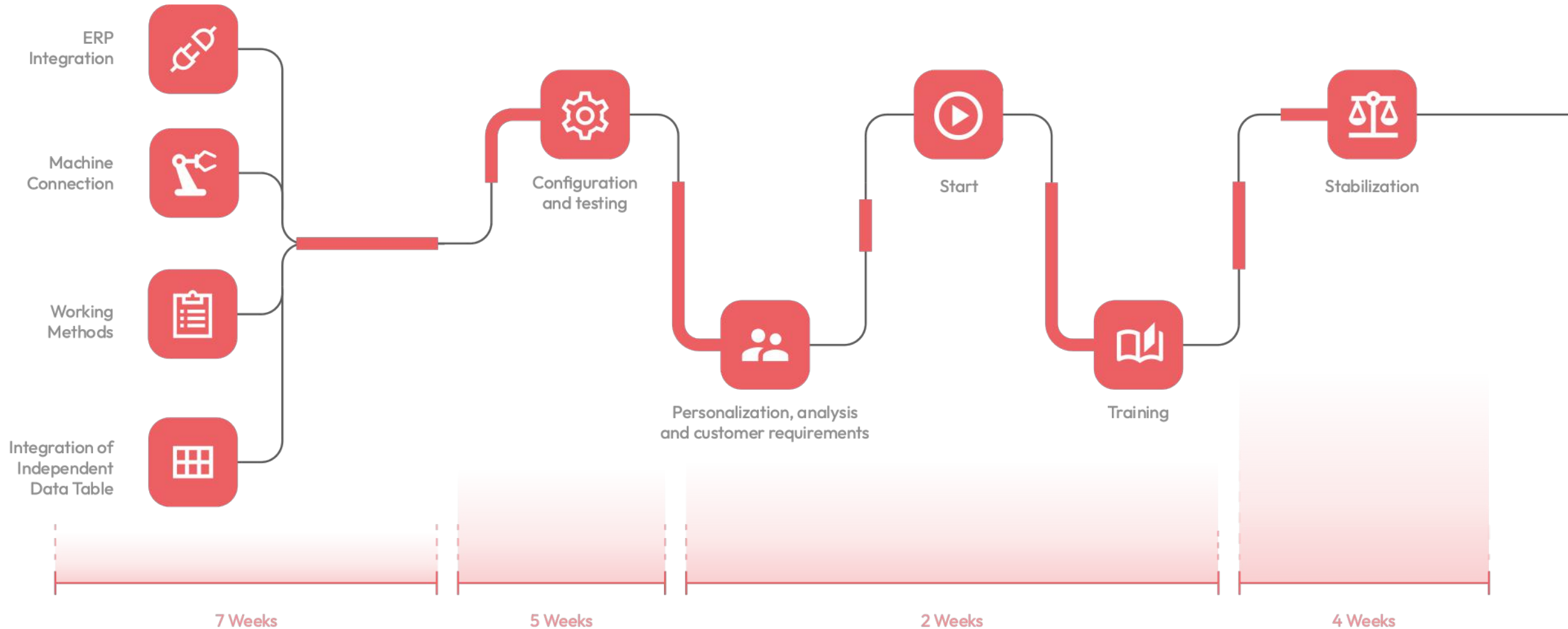
# Timeline

# Scope of implementation

# Monitoring Scope



# Scope of implementation



# Detail of Monitoring Scope



## Use Cases

Ensure that the use of **AppliediT tools** has been **internalized**. (Correct files, supervised quality controls, fault reports, etc.) **Daily review of records, weekly meetings on incidents and causes.**

Until **a high level of satisfaction** is obtained in the **quality of the data (95%)**, the next phase is not proceeded.

2 Months



## Improvement projects

**With a historical record** we can start working with the main users (middle management and management) **to detect areas for improvement, open improvement projects and follow up on them..**

3 Months



## Maintenance

In this phase the client has acquired the **ability to self-manage**, and our work is limited to **reinforcing concepts** if necessary.

4 Months





# Takeaways



## TAKEAWAYS

# Benefits **for your company**

## What are our added values and the advantages we offer?



### **Data into knowledge**

AppliediT helps companies to transform data into knowledge achieving top performance competitiveness.



### **Data engineering services**

AppliediT provides data engineering services for data restructuring and complex data transformation into simplified real time data ecosystems.



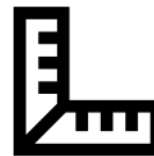
### **World class data solutions**

AppliediT provides world class data solutions applications that goes from lean visualization platforms to advanced analytics tools to sophisticated Machine learning modules, successfully applied to industry complex processes.



### **Real time data**

AppliediT is a solution technological provider that helps customers to access to Real time data for continuous improvement activities and more efficient decision making.



### **Own adapted solutions**

AppliediT team is a multifunctional group of experts that adapts owned solutions on every project, customer, process to the customer needs.

# Thank you!



**Ignacio Quiñonero**  
Partner & Managing Director

+34 651563621 / +34 856 00 39 83

[ignacio.quinonero@applieditweb.com](mailto:ignacio.quinonero@applieditweb.com)

[linkedin.com/in/nacho-quinonero-ferrer](https://linkedin.com/in/nacho-quinonero-ferrer)