

# Company



Nova is a leader in the automotive sector. It's renowned for its innovation and operational excellence in vehicle production.

**Number of employees:**

More than 15,000 highly qualified professionals.

**Turnover:**

Exceeded EUR 5 billion in the last fiscal year.

**Location of headquarters:**

Europe.

**Specialisation:**

Design and production of cars and commercial vehicles, with a focus on sustainable technologies and efficiency.

Nova was facing significant challenges on its production line, which led to the search for innovative solutions such as RTM Pro to optimise processes and improve results.



## EXAMPLE SUCCESS STORY 1

# Cycle times monitoring

## Initial situation

A section of the manufacturing line was experiencing recurring bottlenecks at critical stages, resulting in long cycle times and delivery delays. Operators had little visibility into the specific areas causing the problems, making it difficult to identify solutions and track corrective actions.



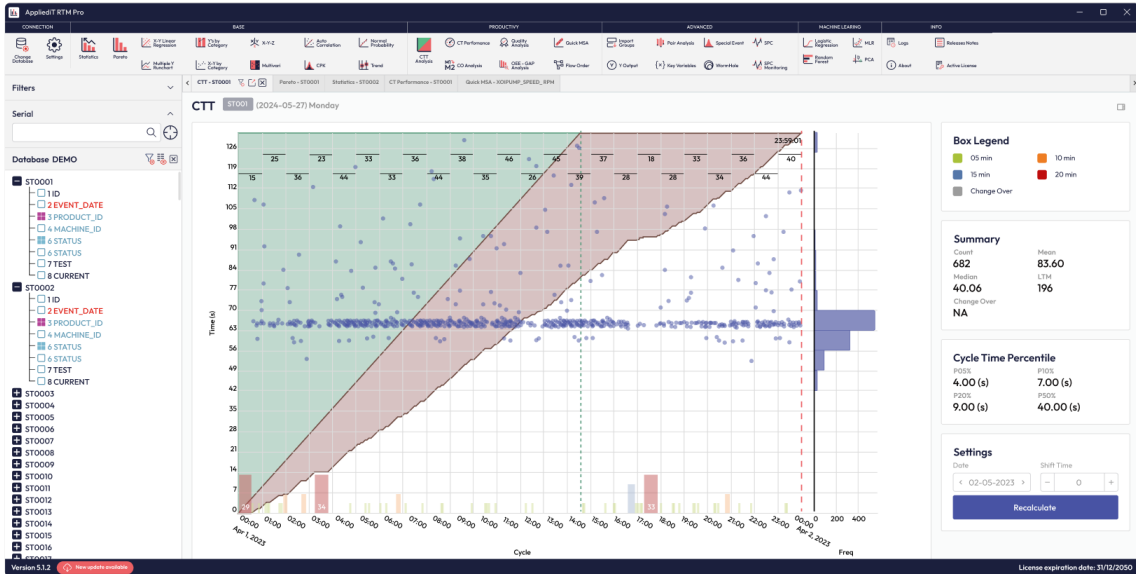
## Solutions

With the support of RTM Pro, the following innovative solutions were implemented:

1. Implemented CTT (Cycle Time Tracking), a feature of RTM Pro that allowed real-time tracking of cycle times by station.
2. Real-time and historical data were analyzed using analytics tools to identify the slowest processes and their causes

differentiating between the best demonstrated performance and P10 and the average P50.

3. Workflows and internal material routing were optimised, eliminating unnecessary steps and adjusting resources as needed.



## Results

Thanks to the implementation of RTM Pro, the company achieved:

1. Monitor bottleneck station implementing corrective actions to achieve 5% reduction in average cycle times, speeding up production without compromising quality.
2. Improved operational efficiency by eliminating bottlenecks, enabling delivery schedules to be met.
3. Increased plant production capacity, improving resource utilisation.

## EXAMPLE SUCCESS STORY 2

# Improving product quality

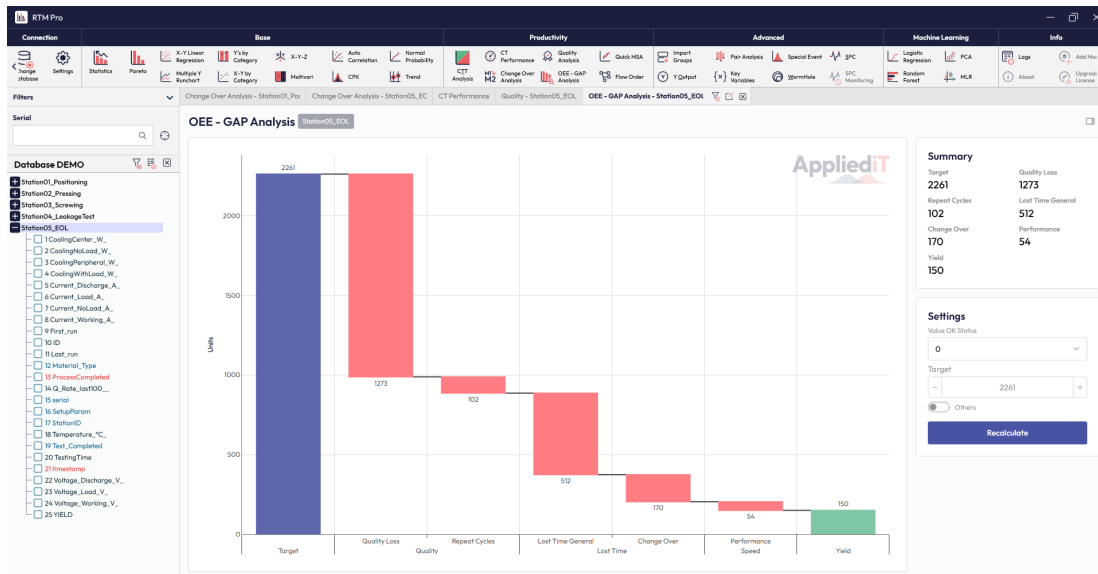
## Initial situation

The plant was suffering from a high rate of defective products, generating material waste and additional rework costs. Problems were difficult to track due to lack of visibility at critical quality control stages.



## Solutions

1. Real-time monitoring functionality was enabled to monitor key parameters during the production process.
2. RTM Pro integrated customized alerts to notify critical deviations in real-time.
3. Special search functionality to find root causes of specific serial numbers that have been rejected across the production line or functional tests.



# Results

Thanks to the implementation of RTM Pro, the company achieved:

- 20% decrease in scrap rate**, achieving a noticeable improvement in final product quality.
- Reduced costs** due to material waste and rework.
- Increased customer satisfaction** thanks to a more reliable and consistent product.

# Summary

These success stories demonstrate the transformative impact of RTM Pro on industrial production by addressing specific problems with innovative solutions. Nova continues to explore new ways to implement RTM Pro to maximise results in its global plants, cementing its position as an industry leader.

